

August 12, 2009

**To: The Shareholders of Rodinia Oil Corp.**

**Dear Shareholders:**

### **Shareholder Report Letter**

We are pleased to provide you with an update of the recent and upcoming activities at Rodinia Oil Corp. (“Rodinia” or the “Company”).

#### **Phase II Seismic Data Results**

Rodinia’s technical team has now completed the interpretation of the Phase II seismic data acquired during the first half of the year in the Officer Basin, Australia and has identified numerous large structures. Management classifies **ten** of these structures as **drill ready prospects** of variable risk levels. Some of these prospects have up to four possible target formations per location.

Three maps are attached to this letter. These maps outline the potential **minimum** closure areas that have been mapped at several formation levels.

#### **Map 1 - Base of Salt**

The deepest level is the “Base Salt” which represents the possible reservoir configuration below the regional Neoproterozoic Alynia salt layer. These structural closures (shown in green on Map 1) have salt overlying and sealing them, and range in size from approximately 16 sq km to 440 sq km – these large structures could potentially hold very large hydrocarbon resources.

#### **Map 2 - Top of Emeroo Reflector**

The second map is of the Neoproterozoic Emeroo reflector above the regional Alynia salt. The Emeroo and several other horizons above the Alynia formation are potential reservoirs. Our recent seismic indicates that an additional salt layer may exist above these potential reservoir formations, at least over part of Rodinia’s acreage. At the Emeroo level minimum structural closures (shown in green on Map 2) range in size from approximately 17 to 320 sq km - very large structures indeed!

#### **Map 3 - Overlap of Structures**

Map 3 shows how the minimum closures at the Base Salt and Emeroo levels overlap with each other. This situation is favorable as it allows for one well bore to test multiple potential horizons. Drill depth to evaluate the deepest reservoir of the ten identified drilling leads is approximately 3000m.

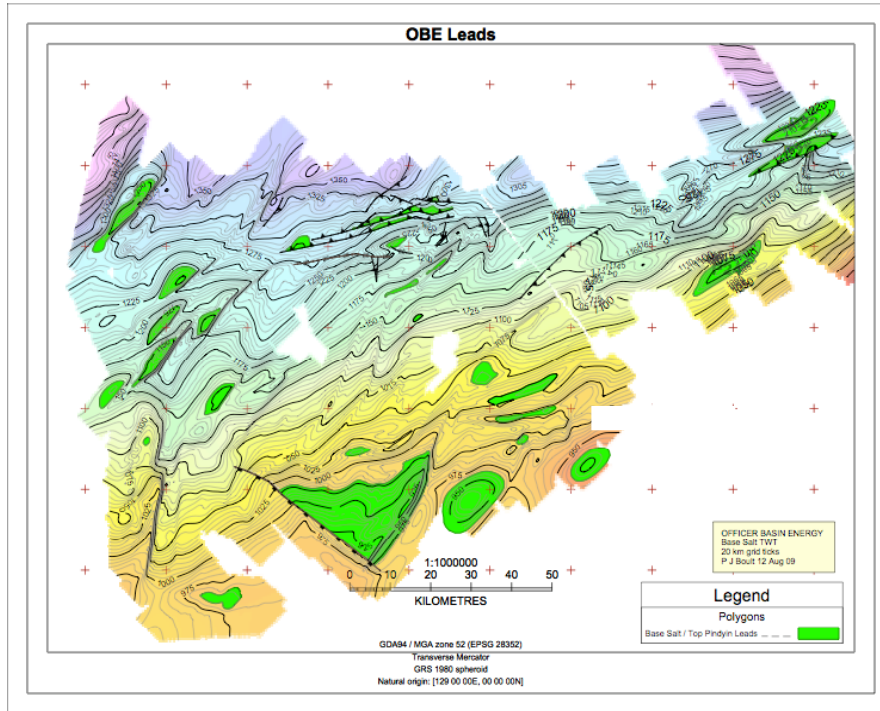
#### **Calgary**

1810, 715 – 5th Avenue SW  
Calgary AB T2P 2X6  
T +1.403.718.0366

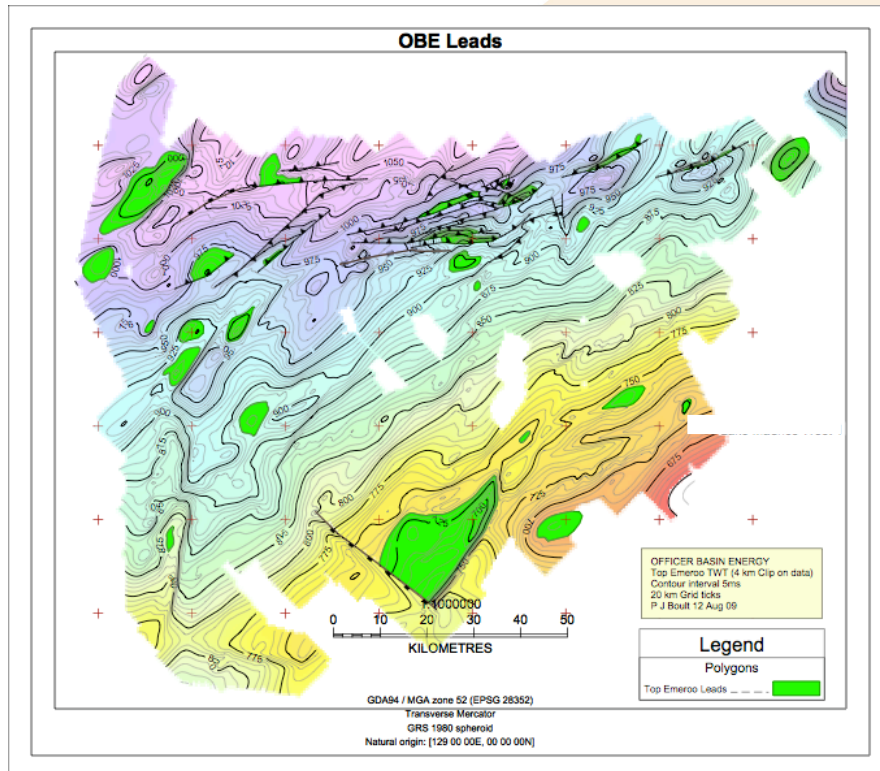
#### **Australia**

40 High Street  
Glenelg South Australia 5045  
T +61.8.8376.2823

**Map 1 - Base of Salt**



**Map 2 - Top of Emeroo Reflector**



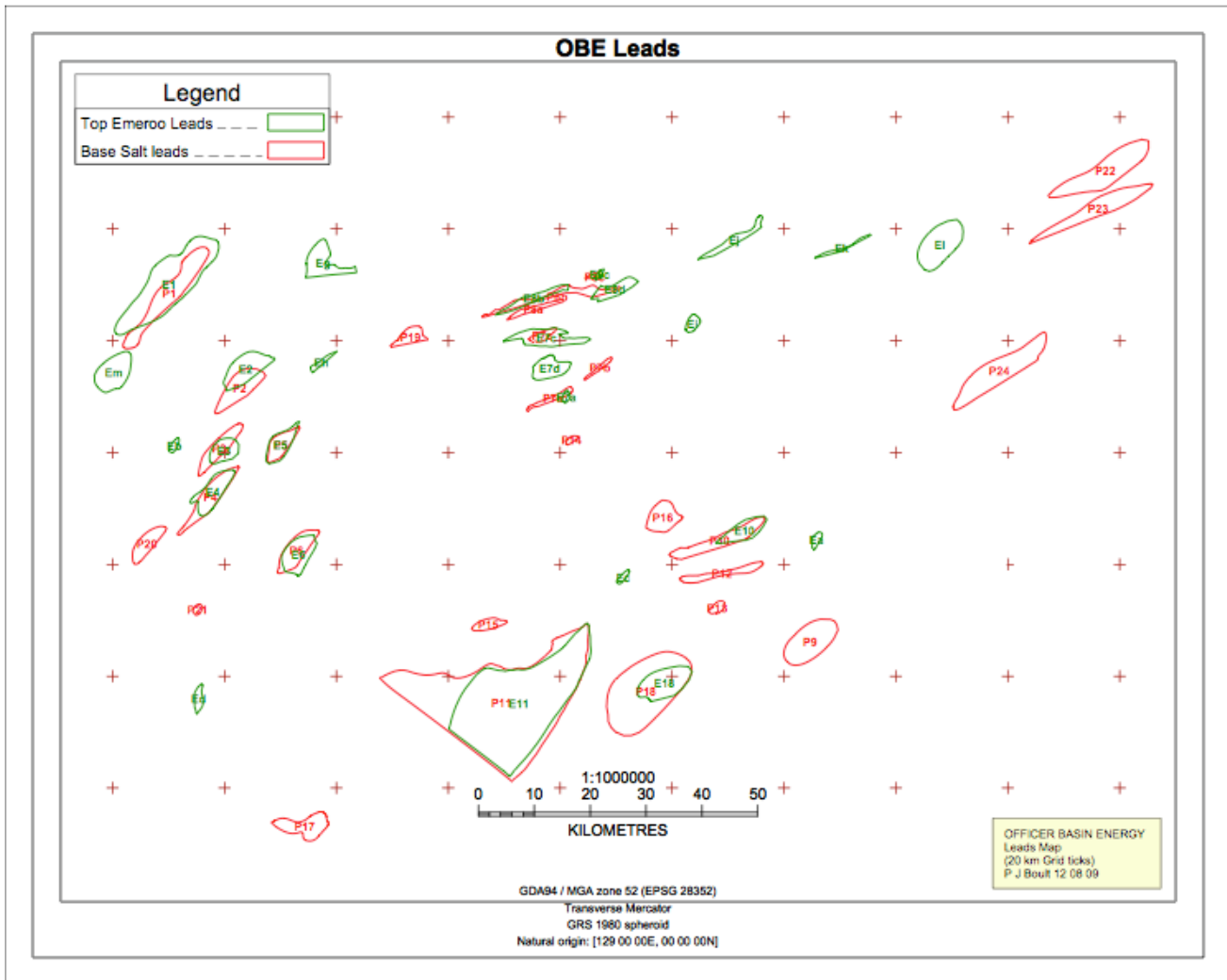
Calgary

1810, 715 – 5th Avenue SW  
Calgary AB T2P 2X6  
T +1.403.718.0366

Australia

40 High Street  
Glenelg South Australia 5045  
T +61.8.8376.2823

### Map 3 - Overlap of Structures



### Common Share Purchase Warrants

The 14,676,315 Common Share Purchase Warrants (exercisable at \$1.00 per share) held by many of our shareholders will expire in August 2009 in accordance with the terms of their issuance.

When we did our 2007 private placement, we had two closings. The first closing was on August 17, 2007 with only one subscriber. That subscriber was issued Warrant Certificate #1, which **expires on August 17, 2009**.

The second closing was on August 23, 2007 with all of the remaining subscribers. Those subscribers were issued Warrant Certificates starting with #2, all of which **expire on August 23, 2009**.

#### Calgary

1810, 715 – 5th Avenue SW  
Calgary AB T2P 2X6  
T +1.403.718.0366

#### Australia

40 High Street  
Glenelg South Australia 5045  
T +61.8.8376.2823

The name "Officer Basin Energy Ltd." was changed to "Rodinia Oil Corp." on March 5, 2008. All of the Warrant Certificates still bear the name of "Officer Basin Energy Ltd.", but they are all fully valid until their respective expiry dates.

### **Seeking Joint Venture Partnership**

Rodinia has begun to seek a joint venture drilling partner with one or more parties, as this would be one of the best options for financing our initial drilling campaign in the Officer Basin.

### **Australia Energy Corp. ("AEC")**

Last February Rodinia formed AEC for the purpose of taking over the Georgina Basin Farmout Agreement. Then in March, AEC raised \$860,000 at \$0.25 per share in a private placement offering.

Since then, AEC and Teralta Petroleum Ltd. (the farmor) have acquired 230 km of seismic on EP 103 and EP 104 in the Georgina Basin, Northern Territory, Australia. The seismic is currently being interpreted but the early results reveal several interesting structures, which will form the basis for the Phase II seismic program.

To date AEC has earned an 18% working interest in the 5.5 million acres (approx.) contained in EP 103 and EP 104.

### **Available Cash and Burn Rate**

In an effort to conserve equity and insulate Rodinia against the frozen global equity markets, Rodinia's management reduced the 2009 general and administrative operating budget in the first quarter of 2009 by approximately 40% of the 2008 amount. With a reduced G&A budget and cash on hand as at August 14, 2009 of approximately \$650,000, the Corporation has sufficient cash reserves to maintain corporate operations well into 2010.

### **Conclusion**

In conclusion, we are very encouraged with the results of the Phase II seismic interpretation and we feel that the next step in exploration in the Officer Basin is a drilling campaign. We are actively seeking a joint venture drilling partner and feel that we are making excellent progress on that front.

Yours sincerely,



Paul Bennett  
President & CEO

#### **Calgary**

1810, 715 – 5th Avenue SW  
Calgary AB T2P 2X6  
T +1.403.718.0366

#### **Australia**

40 High Street  
Glenelg South Australia 5045  
T +61.8.8376.2823